



Your Single Source Solution

EZ-RUBBER Line Sets

DESCRIPTION

EZ-RUBBER is a flexible coextruded jacketed composite material applied to NBR/ PVC tubular insulation. It is a polymeric jacketed material that offers excellent flexibility, abrasion and weather resistance, making it ideal for outdoor and indoor applications.

APPLICATIONS

Ductless mini-split systems. VRF commercial systems. Split system (A/C & Heat Pump).

SPECIAL FEATURES

- Meets ASTM E84 for smoke and fire (25/50)
- Rubberized, anti-tear exterior allows for easier installation of the line set
- UV Resistant
- R410 A Approved
- Insulation is marked every foot
- 1/2" Wall R3.6 Minimum*
- 3/4" Wall R5.6 Minimum*

* R - Value calculation using a K-Factor of 0.25 BTU-in/hr-ft (2)-F @ 75°F, 24°C mean temp.

TECHNICAL SPECIFICATIONS

Copper Tubing: Manufactured according to ASTM B280 and meets ASTM B1003 - Standard Specification for Seamless Copper Tube for Linesets.

Copper: No. C122200 DHP (Phosphorous deoxidized, high residual phosphorous)

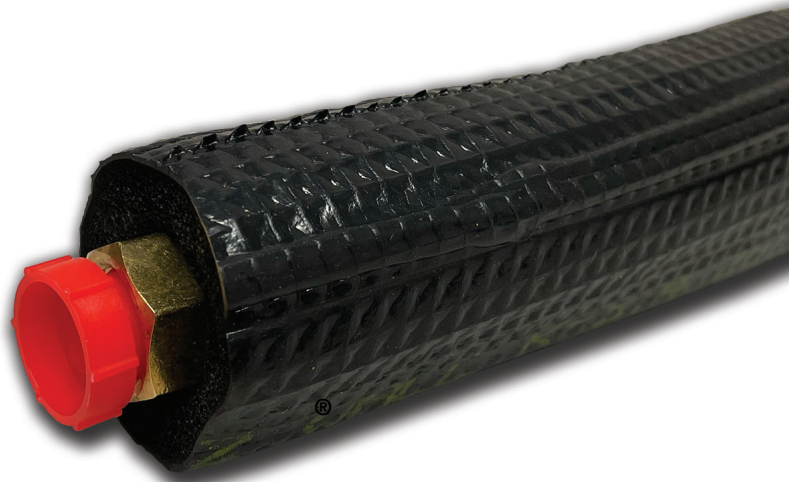
Insulation description: Closed cell, flexible, elastomeric foam insulation with a flexible co-extruded UV resistant jacketing.

Insulation: According to ASTM E96-00

Temperature Range : Meets/exceeds ASTM C 534 -70°F to 220°F

Surface Burning Characteristics: UL 94HBT, ASTM E84 (25/50), flame and spread index less than 25 and smoke development index less than 50 as tested according to UL 94HBT.

JMF OFFERS MORE LINE SET PRODUCT OPTIONS THAN ANYONE IN THE INDUSTRY.



EZ-RUBBER provides excellent UV resistance and protection from weather. EZ-RUBBER's copolymer blend jacket provides excellent protection from tearing during installation.

INSTALLATION

- In order to minimize heat loss and control condensation, it is especially important to seal the end of pipe run to prevent ambient air for entering the system. Failure to do so could result in condensation formation between the insulation and pipe.

JMF COMPANY IS YOUR CONSOLIDATING SOURCE FOR copper tubing, line sets, copper fittings, push to fit, pex, ball valves, gas valves, plumbing valves, malleable fittings, steel nipples, plastic fittings, brass threaded, brass nipples, flare & compression, gas connectors, water connectors, appliance kits, cord sets and MORE.

